



Serving Our Mission

Leadership Eastside is living its mission of developing leaders equipped to thrive in an increasingly interdependent environment who are capable of resolving complex regional issues. This year, the LE Board of Directors will introduce an enhanced, cutting-edge leadership curriculum that we call "LE 2.0."

Through engagement with community leaders, interactive learning, dialogue and reflection, participants learn to lead adaptive change by diagnosing systemic problems, designing interventions and mobilizing stakeholders to address community challenges.

These capabilities also benefit participants' employers. Businesses gain leaders who are equipped for success in an increasingly global economy. Non-profit organizations build capacity and creativity in serving their missions with limited resources. Local governments benefit from leaders infused with new ideas for serving their constituency.

Leadership Eastside has developed more than 160 individuals to become more effective leaders for their employers and their communities and to step into new roles serving on non-profit boards, commissions, chambers and as public officials. We are excited about our future and look forward to helping others be successful!

Earl Bell (LE '09)
Board Chair, Leadership Eastside



Catalysts for Change

The future vitality of this region requires committed, skilled and passionate leaders. LE's three-year community leader development program provides a valuable opportunity for individuals to assist in creating our preferred future. Be part of the corps of LE community leaders who are catalysts for positive change—apply or refer now for our next class.

Stephanie D. Mapelli (LE '08)
President, Leadership Eastside

OUR VISION: Leadership Eastside envisions a diverse, vibrant region served by skilled leaders engaged in creating healthy and mutually supportive communities.

OUR MISSION: Leadership Eastside is an inclusive organization that promotes connections, develops and enriches leaders, and is a catalyst for communities to address important issues and meet the challenges of a diverse and dynamic region.



"The benefits of Leadership Eastside have reached every corner of the eastside region. Since its inaugural class, LE has produced

leaders who are now shaping the future of our region. These leaders have had an extraordinary impact on human services, community based organizations, corporate leadership, and government."

Larry Springer
45th District State Representative

Board of Directors

Earl Bell (LE '09), Chair
Community Leader

Drew Magill, Immediate Past Chair
Director Marketing,
Boeing Commercial Airplanes

Monty Kilcup (LE '11), Chair Elect
Principal, GLY Construction

Jeni Craswell (LE '08),
Co-Vice Chair Curriculum & Programs
The Redmond Foundation

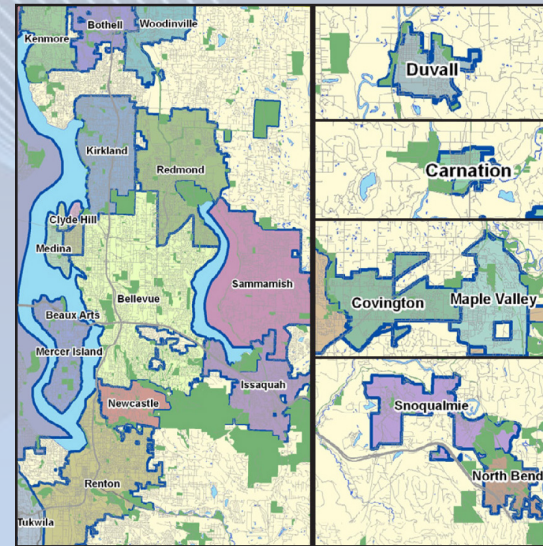
Dan Leahy (LE '08),
Co-Vice Chair Curriculum & Programs
President, Waypoint Leadership Consulting

Stuart Linscott (LE '09),
Vice Chair Alumni
Vice President, Umpqua Bank

Mike Nesteroff (LE '09),
Vice Chair Marketing
Shareholder, Lane Powell LLC

Mike DePuydt, Vice Chair Finance
President & CEO, Senderra Corporation

Jim Hutchinson,
Vice Chair Fund Development
Manager, Local Government & Community
Affairs, Puget Sound Energy



Directors

Laurene Burton (LE '08)
Administrative Director,
Evergreen Hospital Medical Center

Walt Freytag
Senior Lecturer and Associate Director,
University of Washington Bothell

Scott Harrison
President & CEO, BarclayDean

Nancy Hawman
Director Human Resources, The Seattle Times

Amy Hedin
CEO, Human Point

John Hotta (LE '12)
Senior Director, Microsoft

Mike James (LE '10)
Assistant Vice President, Symetra Financial

Holly Koelling
Director of Public Services,
King County Library System

Janet Ray
Managing Director, Corporate Communications,
AAA Washington

Lourdes Salazar
Volunteer Program Coordinator, City of Bellevue

Betty Spieth-Croll
Partner, Langton Spieth LLC

Keri Stout
Executive Director, Bellevue Family Y

Lauren Thomas
CFO and COO, Hopelink

Officers

425.736.2800
P.O. Box 2985 Kirkland, WA 98083
www.leadershipeastside.com
info@leadershipeastside.com



LEADERSHIP
EASTSIDE

2010 ANNUAL REPORT

Class of 2010



Class of 2011



Class of 2012



Building Leadership That Lasts

We thank our sponsors for their commitment to equip the next generation of community leaders for the benefit of us all.



LE Members Making a Difference ...

Each class self-selects community projects that make a regional impact. Below is a list of the project areas addressed by each class.

Class of 2010	Class of 2011	Class of 2012
Education	Economy	Basic Needs
Neighborhoods & Communities (3 projects)	Education	Economy
Basic Needs	Health & Wellness (2 projects)	Health & Wellness (2 projects)
Health & Wellness	Neighborhoods & Communities	

For information on all **LE Community Projects** go to our web site:
<http://www.leadershipeastside.com/curriculum/communityprojects.html>

... Producing Powerful Results...

- In LE's first five years, **95%** of members fulfilled all program requirements for graduation
- **16** are holding or seeking public office
- More than **100** are currently serving on non-profit boards
- More than **150** Eastside organizations benefit from LE volunteerism

Support Leashership Eastside

The life changing and community changing work of LE is made possible through the generosity of organizations and individuals passionate about investing in local people, local communities and their future leaders.

To support LE, contact Stephanie Mapelli at: smapelli@leadershipeastside.com or 425.736.2800

LE members are emerging community leaders with diverse backgrounds and experience representing...

- Business
- Government
- Non-Profit

...who are leading change in their communities...

- 1 By **EXPANDING** connections to Eastside business and community leaders
- 2 By **LEARNING** new adaptive community leadership skills
- 3 And **GAINING** confidence to turn these new skills and connections into action

You can lead change !

Join other emerging leaders living and/or working on the Eastside who desire to be catalysts for community change.

Apply for LE's next class online at

www.leadershipeastside.com/apply/apply.html



LAKE STREET CATERING

